



ZF Clutch Components

Criteria:

Identification

Completeness

Mechanical damage

Corrosion



Clutch pressure plate



Clutch disc

MANUFACTURER-SPECIFIC RETURN CRITERIA



ZF Clutch disc

Criteria:

Identification

Brand must be legible on the part



Acceptable



Acceptable

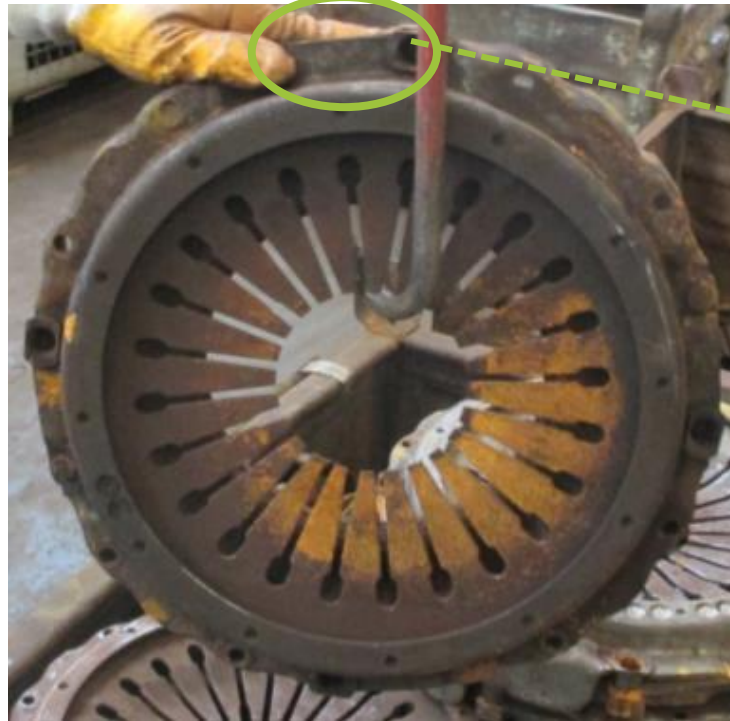


ZF Clutch Pressure Plate

Criteria:

Identification

Brand must be legible on the part (see exemplary picture).



Acceptable



Acceptable



ZF Clutch Disc

Criteria:

Completeness

Acceptable with

- missing torsional damper springs - if hub is not broken
- missing friction material



Acceptable



Acceptable

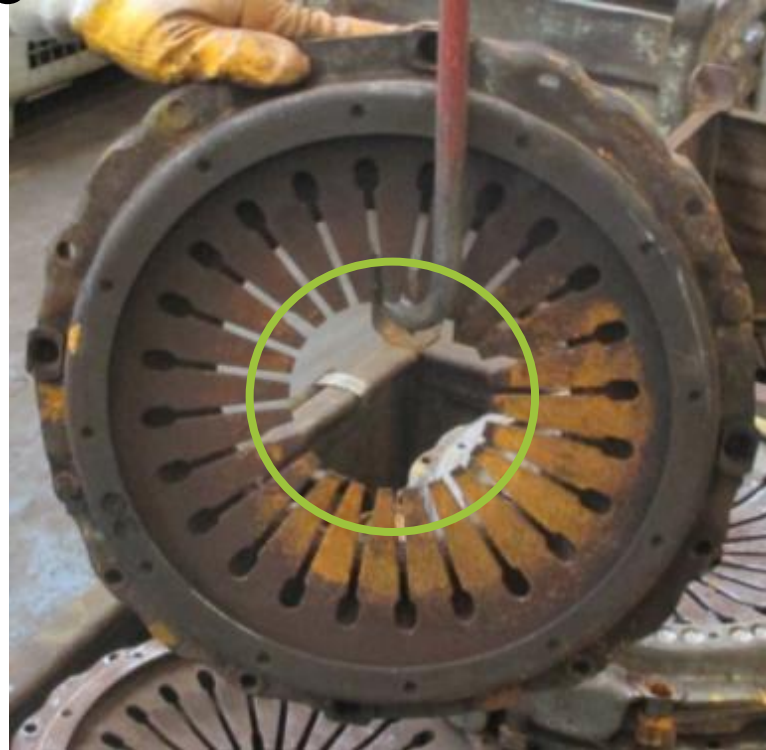


ZF Clutch Pressure Plate

Criteria:

Completeness

Pressure Plate is acceptable if reloader is missing, no need to dismantle it.



Acceptable

MANUFACTURER-SPECIFIC RETURN CRITERIA



ZF Clutch Disc

Criteria:

Mechanical damage

Not acceptable if

- clutch disc is bent or broken
- hub is broken
- damper is broken



Not acceptable



Not acceptable



ZF Clutch Pressure Plate

Criteria:

Mechanical damage

Not acceptable if cover is broken or distorted



Not acceptable



ZF Clutch Disc

Criteria:

Corrosion

Slight corrosion is acceptable,
heavy corrosion is not
acceptable



Not acceptable



ZF Clutch Pressure Plate

Criteria:

Corrosion

Corrosion is acceptable



Acceptable